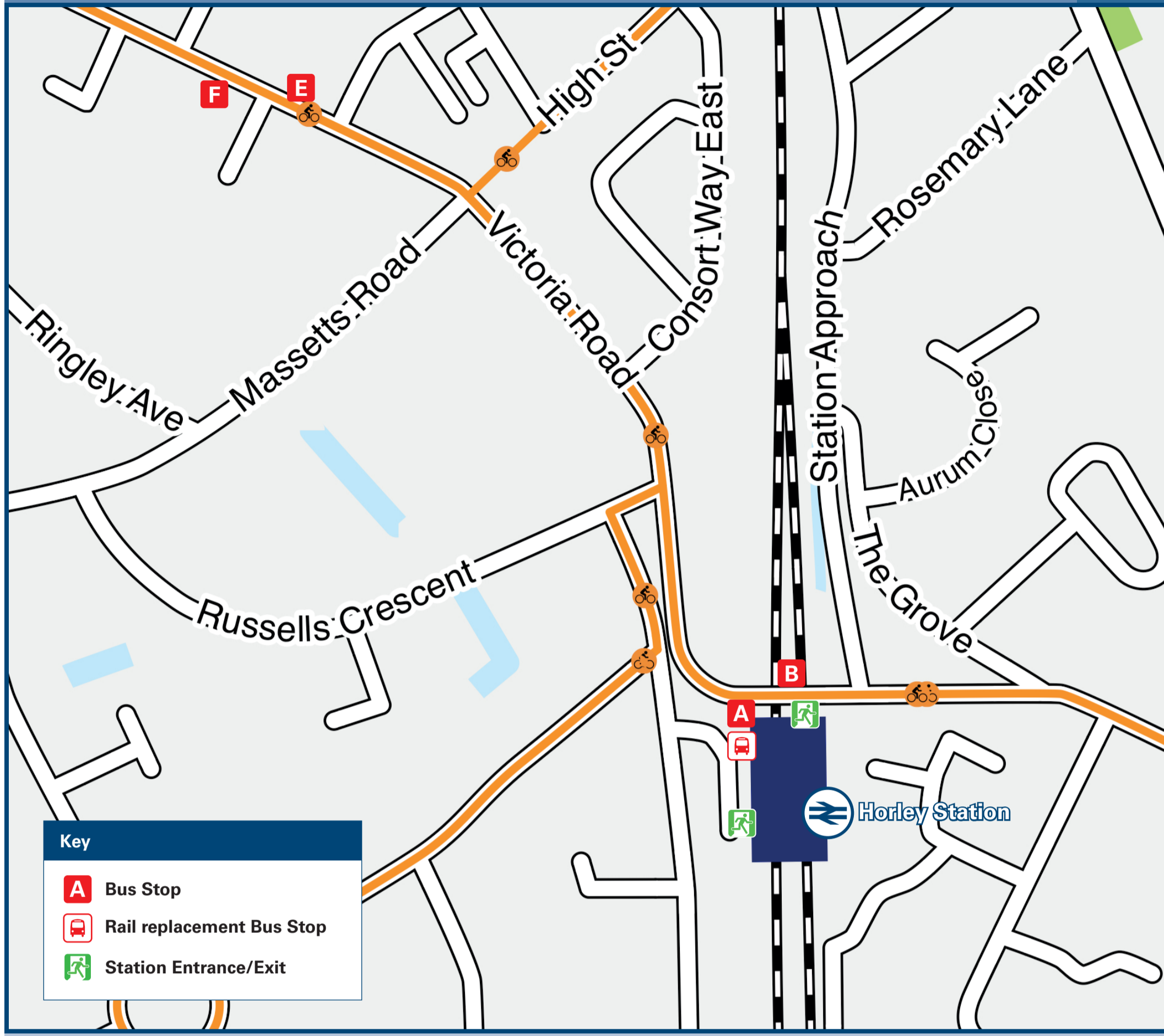




Horley Station

Onward Travel Information

Buses

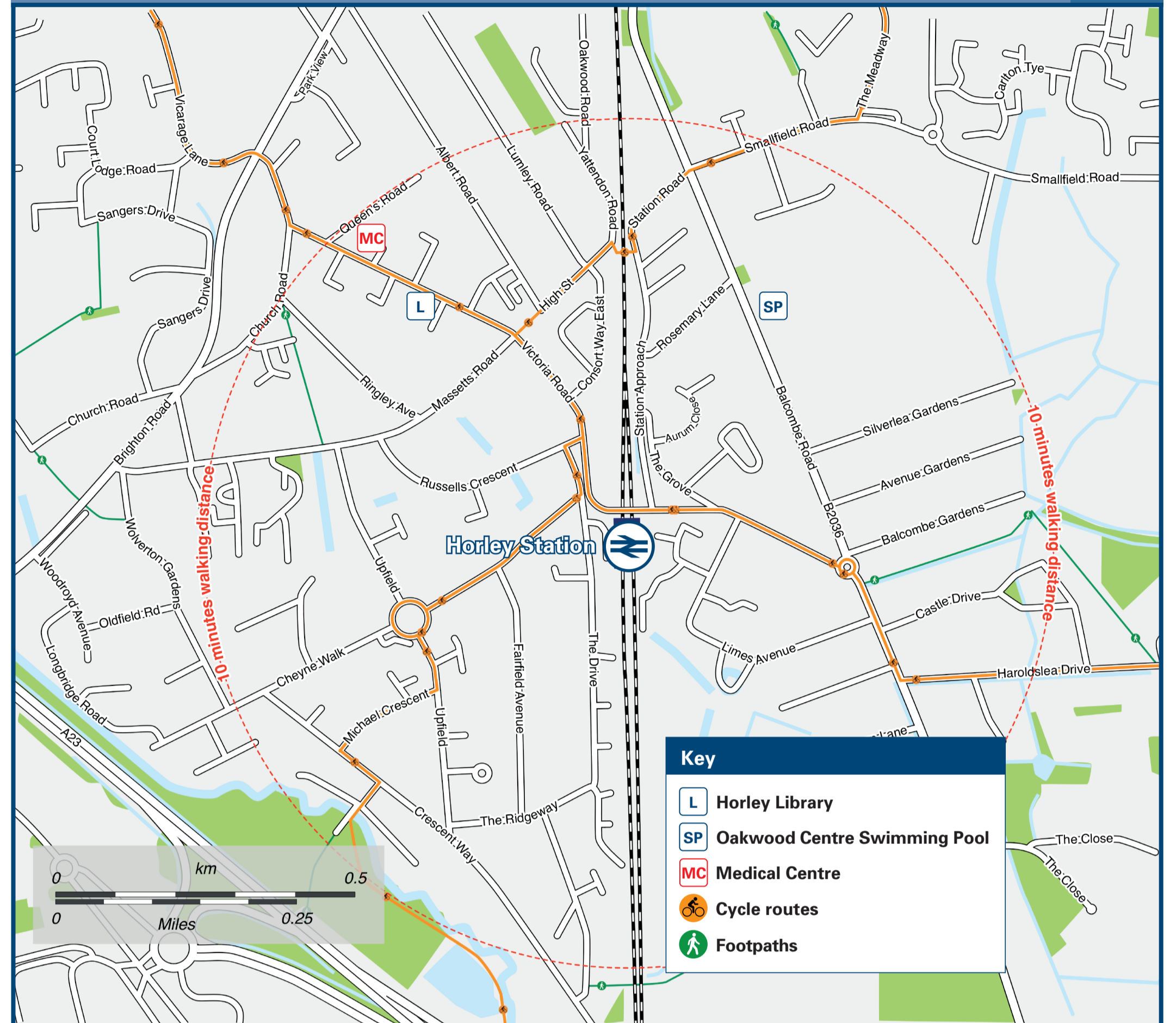


Key

- A Bus Stop
- Bus Rail replacement Bus Stop
- Station Entrance/Exit

Rail Replacement buses depart from outside the Station.

Local area map



Key

- L Horley Library
- SP Oakwood Centre Swimming Pool
- MC Medical Centre
- Cycle routes
- Footpaths

Contains Ordnance Survey data © Crown copyright and database right 2022 & also map data © OpenStreetMap contributors, CC BY-SA

Main destinations by bus

(Data correct at July 2023)



DESTINATION	BUS ROUTES	BUS STOP
Abinger Common / Abinger Hammer	22	F
Broadfield Stadium	20	A
Burstow (Keepers Corner)	424	B
Charlwood	22	F
Chart Downs (Dorking)	22	F
City Place	20	A
	22	E
Copthorne Village	424	B
Crawley	20, 100	A, E
Dorking	22	F
Dovers Green	424	A
East Surrey Hospital	100	F
	422	A
	20	A
Gatwick Airport	22, 100	E
Holmbury St Mary	22	F
Hookwood	22	F

DESTINATION	BUS ROUTES	BUS STOP
Horley (Meadowcroft Close)	20 minutes walk from this station	
	26*	B
Horley (Town Centre)	10 minutes walk from this station	
	20, 26*, 424	A
Langshott / The Acres (Brookfield Drive)	20	B
Langshott / The Acres (Orchard Drive)	20	B
Leigh	22	F
	20	A
Manor Royal	100	E
	424	B
Mead Vale	424	A
Pease Pottage (Woodgate)	20	A
Povey Cross	100	E
	100, 424	F
Redhill	424	A
Salfords	100	F

DESTINATION	BUS ROUTES	BUS STOP
Shiplay Bridge	424	B
Smallfield	424	B
Southgate	20	A
	20	A
Three Bridges	100	E
Tinsley Green	424	B
Westvale Park	424	A
	100	F
Woodhatch	424	A

Notes

Bus routes 20 and 100 operate daily.
 Bus route 22 operates a limited service on Mondays to Fridays only.
 Bus route 424 operates hourly daily. Services on Sundays do not run to Crawley, Manor Royal or Shiplay Bridge.
 For bus times and other bus service enquiries, please contact Traveline on 0871 200 22 33 or contact the bus operator (see below):
 Compass Travel (for bus route 26) call 01903 690 025 or Metrobus (for bus routes 20, 22, 100 & 424) call 01293 449 191.
 * Bus route 26 operates hourly daytime until approximately 13:00 on Mondays, Wednesdays and Fridays only.
 ☺ Change trains at Redhill for Dorking and Reigate
 ☛ Direct trains operate to this destination from this station.

Taxis

Horley Station has no taxi rank or cab office. Advance booking is essential, please consider using the following local operators: (Inclusion of this number doesn't represent any endorsement of the taxi firm)

Carline DSM
01293 430 430

Evo Taxis
01293 730 730

Western Cars
01293 510 510

Further information about all onward travel

Local Cycle Info reigate-banstead.gov.uk For more information about cycle routes.	National Cycle Info sustrans.org.uk Sustrans is the UK's leading sustainable transport charity.	Bus Times See timetable displays at bus stops. www.traveline.info 0871 200 22 33 call cost 13p per minute plus your phone company's access charge	NextBuses Find the bus times for your stop. Search for a bus stop by entering a postcode, street & town or a stop name & town.	PlusBus plusbus.info A discount price 'bus pass' that you buy with your train ticket. It gives you unlimited bus travel around your chosen town, on participating buses.
--	--	--	---	---

National Rail Enquiries

Online nationalrail.co.uk	NRE App Free National Rail Enquiries app for iOS and Android	Social Media facebook.com/nationalrailenq @nationalrailenq	Alert Me You can sign up to Alert Me messages on the National Rail Enquiries website where you can receive train and platform notifications directly to your smart phone. nationalrail.co.uk/alertme	Contact Centre 03457 48 49 50 Calls cost no more than calls to geographic numbers (01 or 02) and may be recorded.	PlusBike nationalrail.co.uk/plusbike For more information.
-------------------------------------	--	---	---	--	---



National Rail
Britain's train companies working together



This poster shows details of popular destinations and main, frequent bus routes. Additional services may run, so please check with Traveline or see posters at local bus stops. Whilst considerable care has been taken to ensure the information contained on this poster is correct and accurate, National Rail cannot accept responsibility for any loss or inconvenience caused by any errors or omissions, or for loss, damage, injury or inconvenience relating to the cancellation, alteration, delay or diversion of a service. For any feedback, please e-mail comments@onwardtravelposters.com

Scan this code with your mobile for full station information.